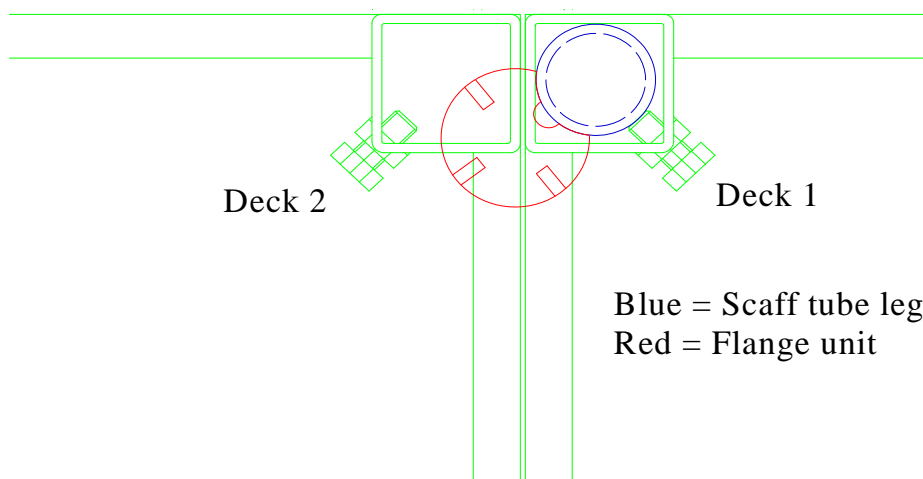


Method Statement for the Erection of Stages Using Flanged Legs

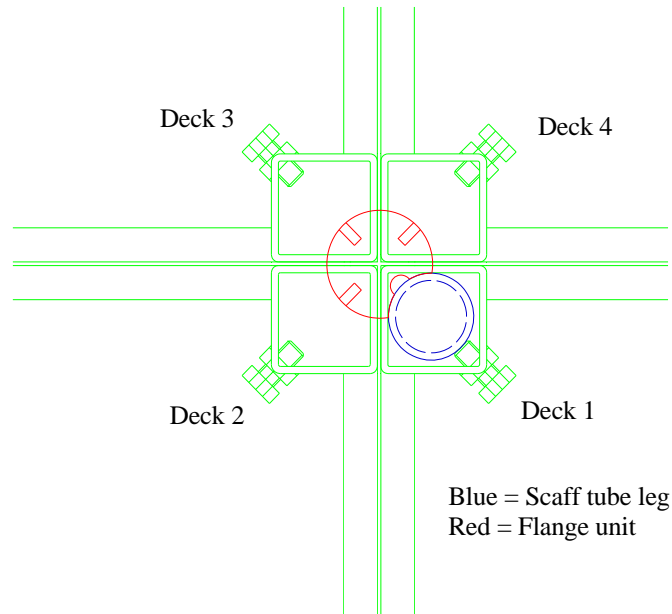
The flanged leg system has been developed to replace the need for multi couplers as it is a faster and safer system. It utilizes a welded unit that has three small turrets protruding out from the top of the circular plate to pick up the leg posts of adjoining deck. This enables safer construction of the stage (especially at a stage height of 6ft +). This reduces the risk of the decks slipping off the flange during construction as the turrets 'lock' the deck into place. The following diagrams and descriptions further explain this:

Where two decks abut, then the flange should be at roughly 45deg to the host deck ensuring that the excess plate is pointing back underneath the stage:



The above diagram shows, in plan view, the position of the flange when it is only required to support one adjacent deck. One of the protruding turrets must be located in the void of the legpost of the 'legless' deck to ensure that the deck does not slip off the flange during construction.

Where four deck abut, then the flange should be set at 135 degrees to the host deck:



The above diagram shows, in plan view, the position of the flange when it is required to support three adjacent decks. Protruding turrets must be located in each void of the legpost of the 'legless' decks to ensure that the deck does not slip off the flange during construction.

It is critical, when using the flanged system, that all the bolt holes nearest to the leg on each deck using that leg as a support be fitted with M10 bolts with hex head nuts that are properly tightened.

With all this in mind then it is time to start to build your stage:

1. Decide on your setting out point.
2. Lay your first deck upside down on the ground and insert a flanged leg into each leg post, making sure that the legs are arranged with the flanges at the appropriate angles.
3. Stand your deck up.
4. Lay your next deck upside down on the ground near to your first deck. Insert flanged legs into those leg posts that will not be sitting on the flanges of your first deck.
5. Turn over your second deck and sit its empty leg posts on the flanges of the first deck as appropriate.
6. Insert bolts and apply nuts that are finger tightened only at this stage.
7. Continue to add more decks to your stage, maintaining a consistent orientation to the location of the legs on the deck, and making sure to put in all the necessary bolts.
8. Go round under your stage and check that all the bolt holes around each leg are fitted with nuts and bolts.
9. Then go round under your stage and tighten all the nuts and bolts.
10. Your stage is now complete and ready to use.